

The Advisor

Going Beyond the Numbers to Deliver Insight, Guidance and Success

GRAY GRAY & GRAY
CERTIFIED PUBLIC ACCOUNTANTS | ADVISORS

Westwood | Framingham | Boston

BEYOND THE NUMBERS

[Home](#) [About](#) [Services](#) [Practice Areas](#) [Partners](#) [Foundation](#)

[Personal Info](#)
[Saved Articles](#)
[Refer Colleague](#)
[Calculators](#)
[Unsubscribe](#)
[Feedback](#)

Gray, Gray & Gray, LLP's News

Gray, Gray & Gray Helps Foster Entrepreneurial Thought & Action

Recently, Gray, Gray & Gray had the distinct honor of serving as an in-kind sponsor of Babson College's 2013 B.E.T.A. (Babson Entrepreneurial Thought and Action®) Challenge. This event was dedicated to the development of entrepreneurial leadership and skills. The "alternative" business plan competition joined Babson alumni and student entrepreneurs in recognizing major business milestones achieved by taking action. [Click here to read more.](#)



[Full Article](#) [Save Article](#) [Email GG&G](#) [Share This](#)

Timely Opportunities

Tax and Other Considerations When Selling Your Home



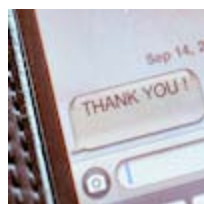
The prime home selling season is in full bloom around the country. Depending on your area and situation, it may be a good time to sell. Mortgage interest rates are down and the National Association of Realtors reports that home sales are up over last year. If you are selling and are eligible for the federal home sale tax break, the profit from selling your principal residence can be free from federal income taxes. Here are the general rules, as well as some special exceptions.

Copyright © 2013

[Full Article](#) [Save Article](#) [Email GG&G](#) [Share This](#)

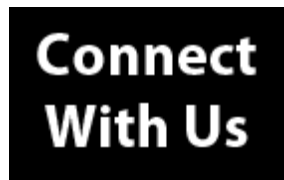
Marketing

Learn Your Business From Your Customers



Customer satisfaction leads to repeat business and a robust bottom line. Here's how to teach your entire staff to unlock the mysteries of what your clientele wants.

Copyright © 2013



[Your Privacy](#)
[Disclaimer of Liability](#)

© 2013, Powered by BizActions

Human Resources

Avoid the Overtime Backlash



Working extra hours can be hard on everyone. Overtime can disrupt employees' lives as well as productivity in the workplace. Here are eight simple steps that can help ease the stress and show your staff your care.

Copyright © 2013

Latest Headlines

Wall Street edges lower after four days of gains

Reuters.com - Wed, 08 May 2013 13:55:52 GMT

Chesapeake wins bond dispute with Bank of NY Mellon

Reuters.com - Wed, 08 May 2013 13:46:17 GMT

Freddie Mac posts second-biggest profit in its history

Reuters.com - Wed, 08 May 2013 13:40:54 GMT

Delta to pay dividend, begin share repurchase program

Reuters.com - Wed, 08 May 2013 13:14:09 GMT

Boeing warns against U.S. Ex-Im Bank closure

Reuters.com - Wed, 08 May 2013 13:12:12 GMT

Saved Articles

View Report

- No saved articles.

Disclaimer of Liability

Our firm provides the information in this e-newsletter for general guidance only, and does not constitute the provision of legal advice, tax advice, accounting services, investment advice, or professional consulting of any kind. The information provided herein should not be used as a substitute for consultation with professional tax, accounting, legal, or other competent advisers. Before making any decision or taking any action, you should consult a professional adviser who has been provided with all pertinent facts relevant to your particular situation. Tax articles in this e-newsletter are not intended to be used, and cannot be used by any taxpayer, for the purpose of avoiding accuracy-related penalties that may be imposed on the taxpayer. The information is provided "as is," with no assurance or guarantee of completeness, accuracy, or timeliness of the information, and without warranty of any kind, express or implied, including but not limited to warranties of performance, merchantability, and fitness for a particular purpose.

To ensure compliance with requirements imposed by the IRS, we inform you that any tax advice contained in this communication (including any attachments) is not intended or written to be used, and cannot be used, for the purpose of avoiding penalties under the Internal Revenue Code.

Investment advisory services offered through Gray Equity Management, LLC. Gray Equity Management, LLC is not affiliated with 1st Global Capital Corp. Securities offered through 1st Global Capital, Corp., Member FINRA, SIPC, (800) 959-8440