

The Advisor

Going Beyond the Numbers to Deliver Insight, Guidance and Success

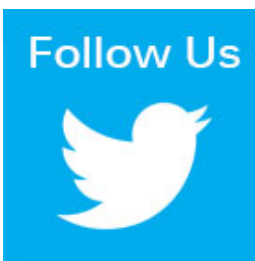
GRAY GRAY & GRAY[®]
CERTIFIED PUBLIC ACCOUNTANTS | ADVISORS

Canton | Framingham | Boston

BEYOND THE NUMBERS

[Home](#) [About](#) [Services](#) [Practice Areas](#) [Partners](#) [Foundation](#)

[Personal Info](#)
[Saved Articles](#)
[Refer Colleague](#)
[Unsubscribe](#)
[Feedback](#)



[Your Privacy](#)
[Disclaimer of Liability](#)

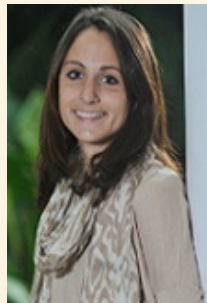
© 2016, Powered by Thomson Reuters
Checkpoint



Gray, Gray & Gray, LLP's News

Congratulations to Newly Promoted Gray, Gray & Gray Team Members!

We are pleased to announce the following team member promotions this July:



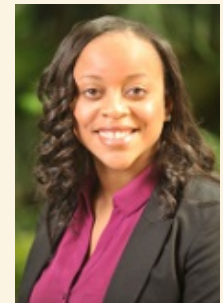
Nicole Bishop
Senior Staff
Franchise/Restaurant
Group



Lisa Mavilia
Generalist
Human Resources



Megan Ricketts
Senior Staff
Franchise/Restaurant
Group



Venice Touze
Manager
Tax

Thank you to Nicole, Lisa, Megan, and Venice for your dedication to going beyond the numbers for our clients. Congratulations on your well-deserved promotions!

[Full Article](#) [Save Article](#) [Email GG&G](#) [Share This](#)

Family Business

Succession Planning Requires Smart Strategies



Overlooking succession planning in a family-operated business is a major mistake. The company you spent years building could cease to exist without a solid plan. Click "Full Article" for some considerations that will allow your firm to continue successfully for generations.

Copyright © 2016

[Full Article](#) [Save Article](#) [Email GG&G](#) [Share This](#)

Human Resources

Avoid Damage From Disgruntled Ex-Employees

Take steps to protect your company when you fire or lay off employees. Anger can prompt unreasonable behavior that can damage your company and even your employees. Here are some important precautions to take when you have to make the painful decision to let an employee go.

Copyright © 2016



[Full Article](#) [Save Article](#) [Email GG&G](#) [Share This](#)

Management

Layoffs: Help Avoid Employment Lawsuits



Staff cutbacks just can't be avoided sometimes in order to ensure a company's survival. If your business is facing difficulties that require layoffs, be sure to take the proper steps to help avoid charges of discrimination or wrongdoing. Click "Full Article" for details on how to make the best of a bad situation.

Copyright © 2016

[Full Article](#) [Save Article](#) [Email GG&G](#) [Share This](#)

Latest Headlines

[S&P 500, Dow ease back after hitting new highs](#)

Reuters.com - Wed, 13 Jul 2016 10:02:35 -0400

[Tesla cuts prices again as sales miss targets](#)

Reuters.com - Wed, 13 Jul 2016 10:26:08 -0400

[Oil down 3 percent after smaller-than-expected U.S. drawdown](#)

Reuters.com - Wed, 13 Jul 2016 10:49:27 -0400

[Teva says Allergan deal to close 'any time'](#)

Reuters.com - Wed, 13 Jul 2016 10:17:51 -0400

[Fed's Kaplan urges 'slow, gradual, careful' approach on rates](#)

Reuters.com - Wed, 13 Jul 2016 10:21:48 -0400

Saved Articles

View Report

- No saved articles.

Disclaimer of Liability

Our firm provides the information in this e-newsletter for general guidance only, and does not constitute the provision of legal advice, tax advice, accounting services, investment advice, or professional consulting of any kind. The information provided herein should not be used as a substitute for consultation with professional tax, accounting, legal, or other competent advisers. Before making any decision or taking any action, you should consult a professional adviser who has been provided with all pertinent facts relevant to your particular situation. Tax articles in this e-newsletter are not intended to be used, and cannot be used by any taxpayer, for the purpose of avoiding accuracy-related penalties that may be imposed on the taxpayer. The information is provided "as is," with no assurance or guarantee of completeness, accuracy, or timeliness of the information, and without warranty of any kind, express or implied, including but not limited to warranties of performance, merchantability, and fitness for a particular purpose.

The information contained in this communication (including any attachments and/or re-directs to other online sources) is not intended or written to be used, and cannot be used, for the purpose of avoiding penalties under the Internal Revenue Code.

Investment advisory services offered through Gray Equity Management, LLC. Gray Equity Management, LLC is not affiliated with 1st Global Capital Corp. Securities offered through 1st Global Capital. Corp., Member FINRA, SIPC, (800) 959-8440