



The Advisor



Information, Insights & The Power of More

[Home](#) [About](#) [Areas of Focus](#) [Services](#) [Partners](#) [Foundation](#)

[Personal Info](#) | [Saved Articles](#) | [Refer Colleague](#) | [Unsubscribe](#) | [Feedback](#)

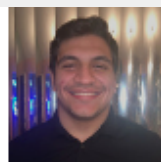
Gray, Gray & Gray, LLP's News

Announcing New Gray, Gray & Gray Team Members!

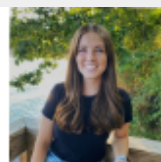
We are pleased to welcome the following new team members to the firm!



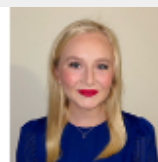
Neve Adler
Gray Private Wealth
Intern



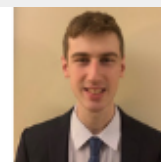
Giuseppe Dattolo
Tax
Intern



Wendy Donnell
Tax
Intern



Mairead Dougherty
Tax
Processing



Brandon England
Tax
Intern



Carol Fernandes
Tax
Manager



Adrienne Gilmore
Tax
Manager



Alexander Hollenbeck
Tax
Intern



Sarah Houle
Tax
Processing



Megan McKeen
Audit
Administrative Assistant



Kevin Sheehy
Tax
Supervisor



Karen Shick
Bookkeeping
Staff



Liam Spillane
Audit
Intern



Allyssa Trumbull
Tax
Intern



Matthew Waxman
Tax
Intern

[Full Article](#) [Save Article](#) [Email Gray, Gray & Gray](#) [Share This](#)

IRS to Require Facial Recognition for Online Payment



Starting this summer the Internal Revenue Service (IRS) taxpayers who go online to access their accounts or pay taxes will be required to submit to facial recognition as a security precaution. The IRS has contracted with a third-party facial recognition company called ID.me to provide the service. Enrollment with ID.me will require submission of a valid government-issued ID, or a copy of a utility bill, and a "selfie" taken with your mobile phone or webcam. The company then uses facial recognition software to assess whether an individual's self-submitted image and official photo match before allowing access to records.

Click [here](#) to learn more.

Family Business

Diminish Drama By Carefully Hiring, Managing Family Employees



Want to watch a soap opera? Just turn on your TV around midday during the week. Where you *don't* want to see a soap opera is within your family business, especially if the drama involves your non-family employees. This article discusses the upsides and downsides of hiring relatives. A sidebar provides a handy checklist for assessing whether family members are indeed performing effectively.

Operations

Business Interruption Claims Require Professional Help



Collecting on insurance loss claims can take months after a company's operations are forced to shut down temporarily because of a severe storm or other devastating event. Click "Full Article" for the reasons why you should seek advice from an accountant rather than go it alone if your company has to file a claim under a business interruption insurance policy.

Business Tax

Federal Tax News for Businesses



1. Reporting by Third-Party Settlement Organizations Is Changing.
2. Business or Hobby? Tax Court Rules in 3 New Cases.
3. Tax Deduction for Businesses Is More Valuable — Temporarily.
4. Deadline Is Coming Up for 1099-NEC Forms for 2021.
5. Could Your Business Qualify for a Disabled Access Tax Credit?

Saved Articles

View Report

- No saved articles.

Disclaimer of Liability

Our firm provides the information in this e-newsletter for general guidance only, and does not constitute the provision of legal advice, tax advice, accounting services, investment advice, or professional consulting of any kind. The information provided herein should not be used as a substitute for consultation with professional tax, accounting, legal, or other competent advisers. Before making any decision or taking any action, you should consult a professional adviser who has been provided with all pertinent facts relevant to your particular situation. Tax articles in this e-newsletter are not intended to be used, and cannot be used by any taxpayer, for the purpose of avoiding accuracy-related penalties that may be imposed on the taxpayer. The information is provided "as is," with no assurance or guarantee of completeness, accuracy, or timeliness of the information, and without warranty of any kind, express or implied, including but not limited to warranties of performance, merchantability, and fitness for a particular purpose.

The information contained in this communication (including any attachments and/or re-directs to other online sources) is not intended or written to be used, and cannot be used, for the purpose of avoiding penalties under the Internal Revenue Code.

Webinar content is intended for educational purposes only. Webinars provide a brief summary based on our understanding and interpretation of current law. All tax references are to federal tax law only, unless otherwise stated. The information contained in the webinars is general in nature and is based on authorities that are subject to change. It is not, and should not be construed as accounting, legal or tax advice or opinion provided by Gray, Gray & Gray, LLP. The material presented may not be applicable to, or suitable for, specific circumstances or needs, and may require consideration of non-tax factors and tax factors not described herein. Contact Gray, Gray & Gray or another tax professional prior to taking any action based upon this information. Changes in tax laws or other factors could affect, on a prospective or retroactive basis the information contained herein; Gray, Gray & Gray assumes no obligation to inform the reader/webinar attendee of any such changes. The material presented is not intended to, and cannot be used to, avoid IRS penalties. This material supports the marketing and promotion of accounting services. Seek advice based on your particular circumstances from independent tax, legal accounting, insurance, investment, and financial advisors.

