

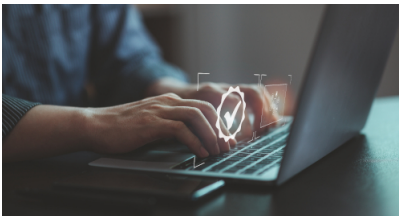


THE POWER OF MORE

NEWS & UPDATES

Welcome to Gray Gray & Gray's Sage Intacct newsletter where we provide helpful insights and information on the many great benefits of the Sage Intacct solution, and ways you can realize their usefulness.

If You Love Processing Invoices, Don't Read This Article!



Do you enjoy filling your day by manually entering bills into your accounting system? Are you OK with spending more time than necessary on invoice management? Or would you rather be doing something more productive with your time?

Very few people get a kick out of the tedium of manual bill entry. Invoice management is a time-consuming process that is ripe for errors, duplication, and oversights. An IDC Info Brief report (Sept. 2022) estimates that manual entry takes 9-24 minutes per invoice. Way too long! There must be a more practical, faster and more accurate alternative.

There is. Sage Intacct AP Bill Automation is an AI-powered invoice management process that captures and digitizes incoming bills and automatically creates records for review and approval.

[READ THE ARTICLE HERE](#)

Sage Intacct Webinars

Driving Nonprofit Financial Efficiency with Paperless Automation
[WATCH HERE](#)

Elevating Your Nonprofit Story with Data and Performance Metrics
[WATCH HERE](#)

Driving Growth Through Automation in Construction Accounting

[WATCH HERE](#)

Solutions for Home Builders: Manage Success with Best-of-breed Technology

[WATCH HERE](#)

Team Member Spotlight: Brett Kramer, MSA

Anyone who has ever visited a construction site knows that it can appear to be organized chaos. But the multiple component procedures that comprise the overall building progression all have a purpose in the carefully choreographed process that results in a completed project. An essential part of that well-planned sequence is making sure the financial aspects of the work are synchronized and vigilantly managed. That's where people like Gray, Gray & Gray's Brett Kramer come in.



bkramer@gggllp.com

Brett is a leading Sage Intacct consultant with a focus on serving clients in the construction and real estate development market. He and the Sage Intacct team expertly assess, design and implement the critically acclaimed Sage Intacct CRE software platform that has been designed specifically for companies operating in the construction, contracting and real estate development arena.

He is well prepared for the job. Prior to joining Gray, Gray & Gray, Brett was a corporate financial analyst for the John E. Green Company, one of the country's largest mechanical contractors, where he gained valuable experience in the direct use of Sage Intacct to manage the company's growth and expansion.

"Sage Intacct's CRE software enables a contractor or developer to connect accounting and project management functions to provide field teams access to financial data," says Brett. "This reduces typical financial consolidation from 100+ hours down to just minutes. Sage Intacct CRE simplifies and automates accounting tasks, provides real-time business insights, and gives you the power to manage costs and productivity in real-time, from any location."

Beyond the direct financial management of individual projects, Sage Intacct CRE is an invaluable tool for supporting the growth and profitability of a construction business or real estate development company. "Nobody has just one project going at any one time," reminds Brett. "Sage Intacct CRE can help coordinate finances across multiple projects, giving a user the ability to find areas where efficiencies can be found, while still tracking costs and profitability on a project-by-project basis."

Brett is a graduate of Walsh College, where he earned a Bachelor's degree in Finance and Master's degree in Accounting. In addition to his Sage Intacct credentials, he is a Certified Salesforce Administrator. Outside of building Sage Intacct systems that foster growth for clients, Brett enjoys golf, skiing and paddleboarding.

Interested in learning more about the Sage Intacct Solution from Gray, Gray & Gray?

[Schedule a Consultation](#)

Do you know anyone that could use Gray, Gray & Gray's assistance?

Do you have a colleague that would like to receive our news?

Submit a Referral

Subscribe Here

Follow Us on LinkedIn:



Gray, Gray & Gray, LLP | The Power of More
150 Royall Street, Suite 102 | Canton, MA 02021

Web: www.gggllp.com | Phone: 781.407.0300 | Email: thepowerofmore@gggllp.com

This is a marketing email from Gray, Gray & Gray, LLP

If you no longer wish to receive these emails, click on the following link: [Unsubscribe](#).

To view this message in a browser, [click here](#).

The information contained in this communication (including any attachments and/or re-directs to other online sources) is not intended or written to be used, and cannot be used, for the purpose of avoiding penalties under the Internal Revenue Code.

Copyright © 2023. All Rights Reserved.